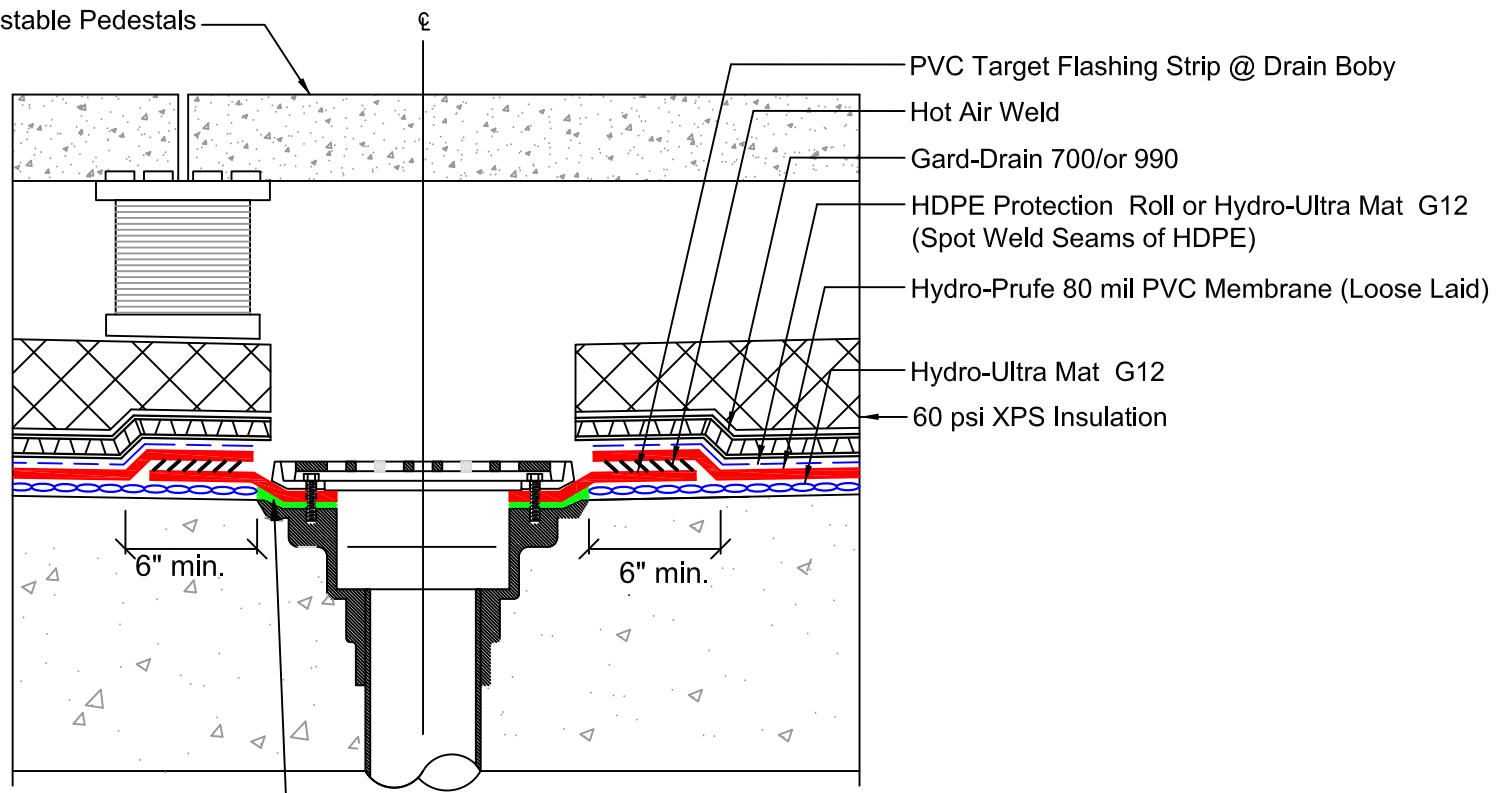


Concrete Pavers with Adjustable Pedestals



Clean Drain Ring and apply a heavy bedding of SAF-30 at Drain as shown and immediately embed Hydro-Prufe Flashing Strip into wet SAF-30. Install Clamping Ring and Bolt securely. (Apply SAF-30 to Drain Body a minimum of 1/4" thick)



DETAIL NAME:
DRAIN @ PAVERS w/ PEDESTALS

| | | |
|--------|----------|------------|
| Scale: | Date: | Drawing #: |
| NTS | 12-01-15 | HP-DR-003 |
| | | |